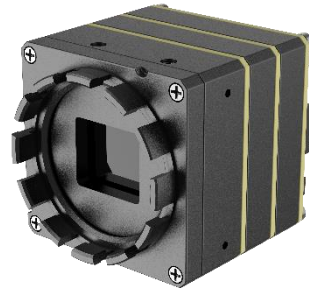


## DS-2TM06-LF/A Thermal Camera Module



### Key Feature

- High sensitivity sensor with  $640 \times 512$  resolution
- NETD is less than 35 mk (@25°C, F# = 1.0)
- Leading thermal image processing technology: Adaptive AGC, DDE, 3D DNR
- Highly-reliable shutter, up to 300,000 exposures
- Support CVBS and BT.656
- Digital zoom 1x, 2x, 4x, 8x
- Focus mode configuration (manual, semi-auto focus)

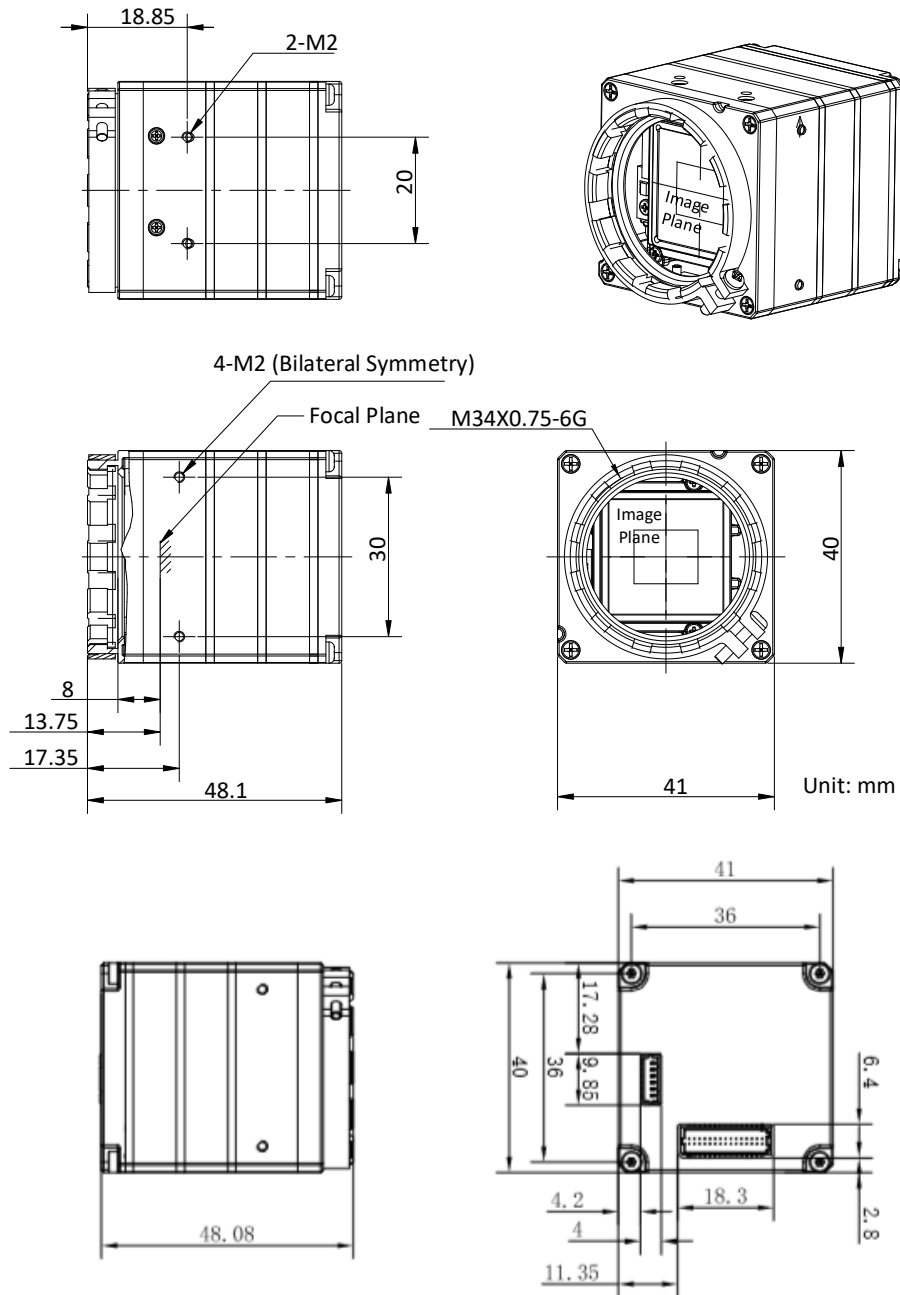
## ▪ Specification

Thermal Module	
Image Sensor	Vanadium Oxide Uncooled Focal Plane Arrays
NETD	< 35mk @ F1.0, 25°C (86°F)
Response Waveband	8 μm to 14 μm
Max. Resolution	640 × 512
Pixel Pitch	17 μm
Frame	25 fps (BT656); 50 fps (YUV+RAW)
Palettes	White Hot, Black Hot, Fusion1, Rainbow, Fusion2, Ironbow1, Ironbow2, Sepia, Color1, Color2, Ice Fire, Rain, Green Hot, Red Hot, Dark Blue
Digital Zoom	1x, 2x, 4x, 8x
System	
Crosshair	Support Cross Auxiliary Correction Function (For PTZ)
General	
Power	12 VDC (5 to 16 VDC)
Power Consumption	≤ 1.79 mW (TYP) With Zoom And Focus Off
Video Output	8 bit BT.656 (720 × 576)/(YUV+14 bit RAW) BT.656 Output Data Supports Progressive / Interlaced Configurable
First image	< 5s
Communication Type	RS-232 Serial Port
Shutter Life	300,000 Times
Lens Mount	M34 × 0.75; M45 × 1
Working Temperature	-40°C to +70°C (-40°F to 158°F)
Storage Temperature	-45°C to +85°C (-49°F to 185°F)
Dimensions	40 mm × 41 mm × 49 mm (1.57" × 1.61" × 1.93")
Weight	< 82 g (0.18 lb) (Without Lens)

## ▪ Available Model

DS-2TM06-LF/A

## Dimension



Unit: mm

### ▪ Accessory

### ▪ Optional



IT-SP100D10DS-  
640x17S1



IT-SP50D10DS-  
640X17S1




IT-  
SF50G10HS-  
640X17S2



IT-SP75D10DS-640x17S3

**COMPLIANCE NOTICE:** The thermal series products might be subject to export controls in various countries or regions, including without limitation, the United States, European Union, United Kingdom and/or other member countries of the Wassenaar



Arrangement. Please consult your professional legal or compliance expert or local government authorities for any necessary export license requirements if you intend to transfer, export, re-export the thermal series products between different countries.

