

1000M Fiber to Rj45 Media Converter

(Model: EW-810SFP-GE)

Ewind



- Connection between fiber to copper 1Gbps Ethernet equipment function as fiber-to-copper media converter for long distance transmission
- Media converter for network backbone(SAN, LAN, MAN)
- Can be applied in Telecommunication room, R&D laboratory, Data center, and etc.
- Providing protections against lightning and static electricity for Ethernet network and the network main system
- Providing additional network management options

RoHS FC CE

INTRODUCTION

The Transceiver converts 1000BASE-SX/LX/LH/EX/ZX - fiber to 10/100/1000Base-T copper media or vice versa, it's used to be the fiber as the media for transmission. It is designed for use with 850nm multi-mode/1310nm single-mode/WDM - fiber cable utilizing the LC-Type connector, transmitting data up to 0.55 kilometers or 100 kilometers. 1000M Ethernet standalone and module cards, brings you the best and simple solution for the Ethernet conversion between media of copper wire and fiber, with the speed of 1000Mbps.

TECHNICAL SPECIFICATION

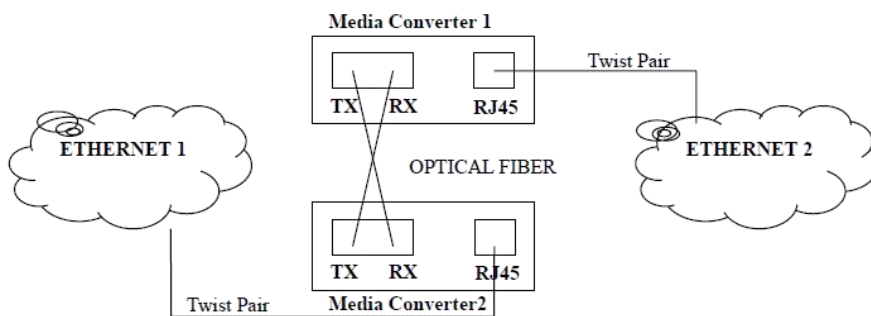
Model		EW-810SFP-GE
Optical Interface	Connector	SFP
	Data Rate	1000Mbps
	Duplex Mode	Full duplex
	Fiber	MM 50/125um,62.5/125um SM 9/125um
	Distance	10/100/1000Mbps: MM 550m/2km,SM 20/40/60/80km
	Wavelength	MM 850nm,1310nm SM 1310nm,1550nm WDM Tx1310/Rx1550nm(A side),Tx1550/Rx1310nm(B side) WDM Tx1490/Rx1550nm(A side),Tx1550/Rx1490nm(B side)
UTP Interface	Connector	RJ45
	Data Rate	10/100/1000Mbps
	Duplex Mode	Half/full duplex
	Cable	Cat5/5e/6/6a/7
	PWR	Power

LED	FDX	Full Duplex Indication
	LINK/ACT	Fiber/Rj45 Link/Act
	100	RJ45 Port Speed 100M
	1000	RJ45 Port Speed 1000M
Product Size	Dimension(W*D*H)	95*78*23mm
	Weight	0.8KGS
ESD Protection	6KV DC	
Installation	Desktop, wall mountable Media convert Chassis installation	
Enclosure	Compact-sized metal case	
Power Input	DC 5V 1A	
External Power	AC 100V~240V	
Power consumption	3.75 watts / 12.8 BTU per hour max.	
Fabric	2Gbps	
Throughput (packet per second)	1.488Mpps@64bytes	
Address Table	9K entries, automatic source address learning and aging	
Jumbo Frame	12K	
Temperature	0~50℃ Operating; -40~70℃ Storage	
Humidity	5~95%(no condensing)	
MTBF	≥10.0000h	
Network Cables	10G/5G/2.5G/1G/100M BASE-T: 10G--Cat 6A/Cat 7 5G--Cat 6/Cat 6A/Cat 7 1G/2.5G--Cat 5e/Cat 6/Cat 6A/ Cat 7 100M--Cat 5/Cat 5e/Cat 6/Cat 6A/ Cat 7 Cat 5/5e/6/6A/7 UTP cable (100 meters, max.) EIA/TIA-568 100-ohm STP (100 meters, max.) 1000BASE-SX/LX/BX: 50/125μm or 62.5/125μm multi-mode fiber optic cable, up to 300m 9/125μm single-mode fiber optic cable, up to 80km	
Regulatory Compliance	CE,FCC,RoHS	
Operating environment	0 ~ 50 ℃	

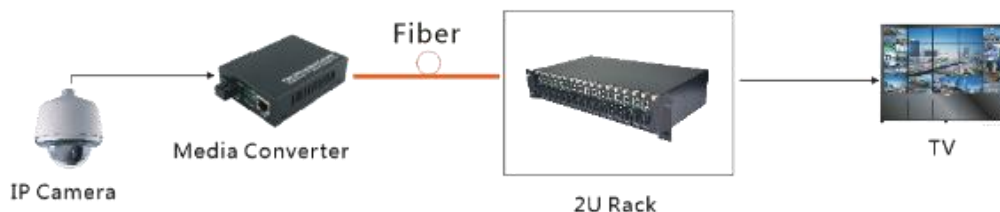
Storage environment	0 ~ 70 °C
Operating Humidity	5 ~ 95%, relative humidity (non-condensing)
Storage Humidity	5 ~ 95%, relative humidity (non-condensing)
Standards Compliance	IEEE 802.3u 100BASE-TX IEEE 802.3ab 1000BASE-T IEEE 802.3bz 2.5G/5GBASE-T IEEE 802.3an 10GBASE-T IEEE 802.3ae 10Gbps Ethernet IEEE 802.3x full-duplex flow control
Warranty	2-year warranty

APPLICATION

- Extend your Ethernet connection up to 0~120km away using fiber optics;
- Creates an economical Ethernet-fiber/copper-fiber link for connecting remote sub-networks to larger fiber optic networks/backbones;
- Converts Ethernet to fiber, fiber to copper/Ethernet, ensuring optimum network scalability for connecting two or more Ethernet network nodes;



2: CCTV Surveillance Security.



FEATURES

- Transparent Transport and very low delay
- Support ITUT prescribed DWDM/CWDM wavelength

- Support DMI function for SFP fiber module
- Support Loop-back test function
- Economic In-band Management function
- Powerful Network Management function
- Support hot plugging
- Support 2U Rack (16 channel) and standalone use
- Full State Led display
- Easy installation
- UTP cable length detection (only RJ45 interface)

PACKING LIST

CONTENT	QTY	UNIT
10/100/1000M Fiber To Rj45 media Converter (EW-810SFP-GE)	1	SET
User Guide	1	PC
Warranty Card	1	PC