

# RG-EG406XS-P

## 5-Port (4 PoE/PoE+) 2.5G Cloud Managed Router, 1 x 10G Port



### Highlights

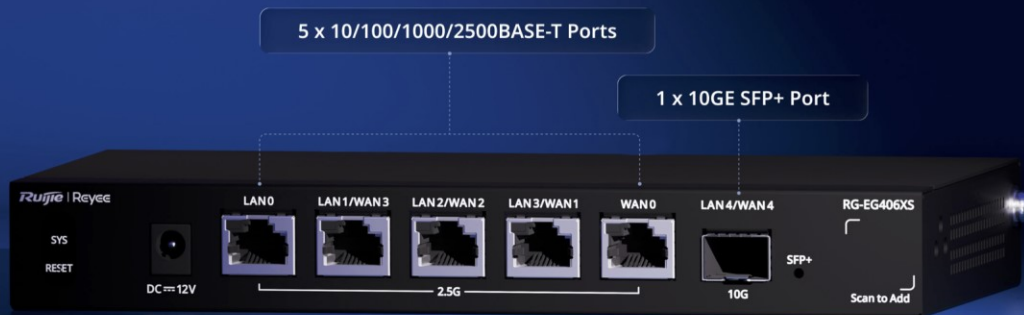
- Supporting up to 400 concurrent clients, with 4 PoE Out ports.
- High-performance router with 2.5 Gbps throughput for diverse network scenarios.
- Efficient bandwidth management based on applications and users.
- Multi-WAN, smart load balancing.
- Lifetime\* free management on Ruijie Cloud anytime, anywhere.

\* Lifetime means the lifespan of the product, subject to EOL policies.

# Highlight Features

## RG-EG406XS

Unleashing Multi-Gig, Elevating Performance



400  
Concurrent Clients

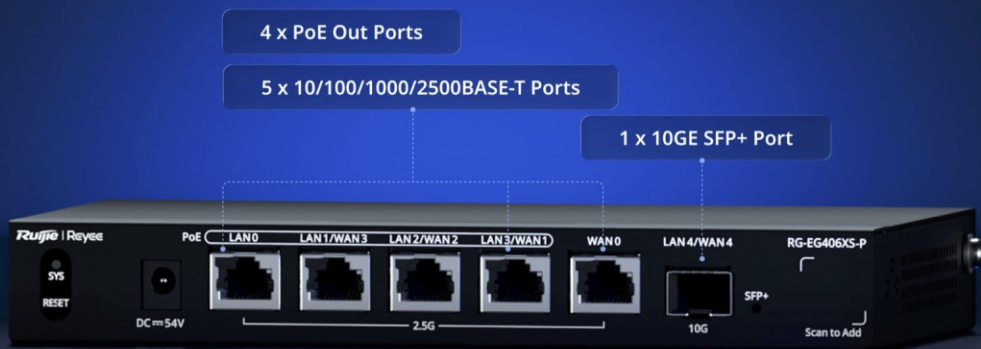
100  
VPN Tunnels

2.5 Gbps  
Throughput

Multi-WAN  
Load Balancing

## RG-EG406XS-P

Unleashing Multi-Gig, Elevating Performance



400  
Concurrent Clients

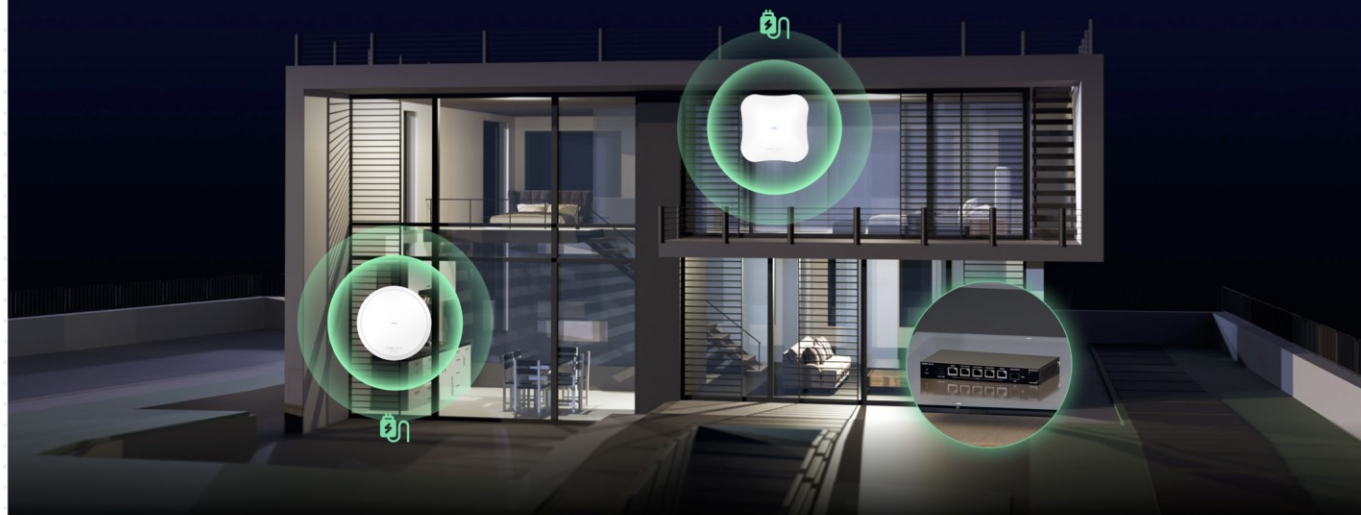
100  
VPN Tunnels

2.5 Gbps  
Throughput

Multi-WAN  
Load Balancing

## Whole-Home 2.5G, Designed for Your Ideal Living

Empower every corner with ultra-fast, intelligent connectivity

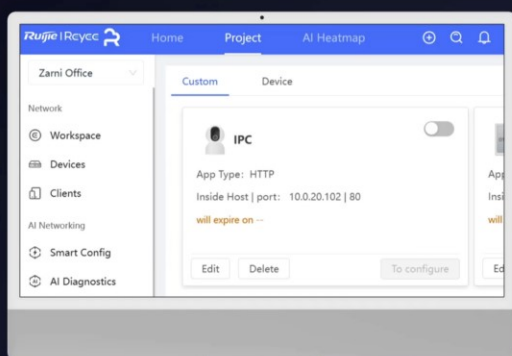


\* Product images are computer-generated for illustration purposes only. Actual products may vary in details, features, or appearance.

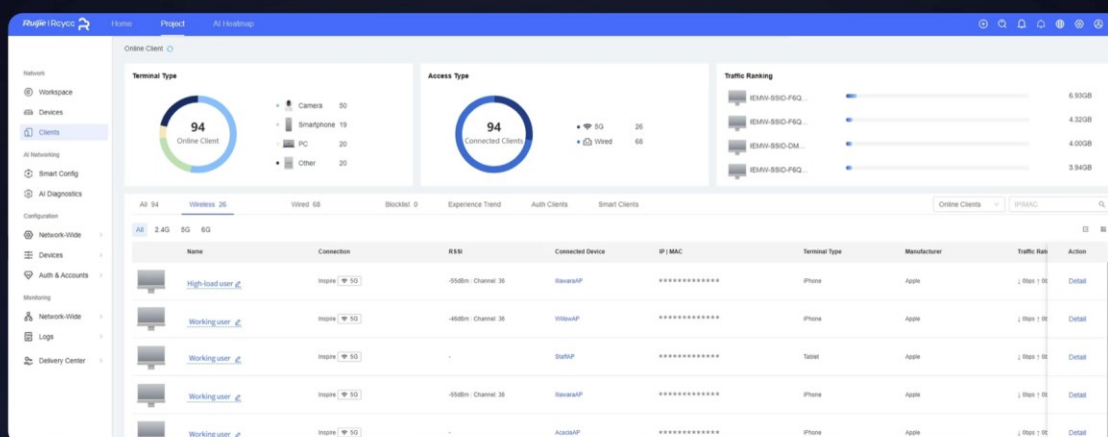
# Highlight Features

## Easy NAT Traversal

The management console uniformly displays all third-party devices, enabling easy intranet access and one-click links to their web interfaces.



## Client Recognition & Flow Control



## Cloud, Make Your Business Easy

- Self-organizing network
- Quickly advanced service setup by app
- Scenario-based configuration guide
- Marketing portal authentication



\* Product images are computer-generated for illustration purposes only. Actual products may vary in details, features, or appearance.

## / Hardware Specifications

| Model                                  | RG-EG406XS-P  |
|--|---|
| Port Specifications                    |   |
| Total number of optical ports          | 1   |
| Total number of RJ45 ports             | 5   |
| Number of 10/100/1000/2500BASE-T ports | 5   |
| Number of 10GE SFP+ ports              | 1   |
| Maximum number of LAN ports            | 5   |
| Maximum number of WAN ports            | 5   |
| Number of fixed LAN ports              | 1   |
| Number of fixed WAN ports              | 1   |
| Number of LAN/WAN ports                | 4   |
| LEDs                                   | 1 x system status LED<br>6 x Ethernet port LEDs   |
| Reset button                           | 1   |
| System Specifications                  |   |
| CPU                                    | Quad-core processor, 2.0 GHz clock frequency per core   |
| Flash memory                           | 256 MB  |
| RAM                                    | 1 GB  |
| Power Supply and Consumption           |   |
| Power supply                           | DC power adapter  |
| Dimensions of the DC connector         | Outer diameter: 5.5 mm (0.22 in.)<br>Inner diameter: 2.1 mm (0.08 in.)<br>Depth: 10.0 mm (0.39 in.) |
| Maximum power consumption              | 9.2 W (with no PoE load)<br>129 W (with full PoE load)  |
| PoE budget                             | 110 W   |
| Number of PoE Out ports                | 4   |
| PoE budget per port                    | 30 W  |



*Ruijie* | ReYee

 Redefine your easy network



**Ruijie Networks Co., Ltd.**

Official Website: <https://Reyee.Ruijie.com>