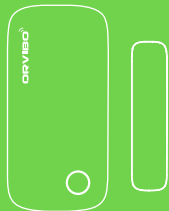


Product Manual

Door/Window Sensor



ORVIBO



Welcome!

Thank you for choosing our products,
Hope our products will add some
intelligent color in your good life.

01

Product overview

SM10ZW entrance sensors can be installed on doors, windows or other openable objects. When used with the Smart Hub and "HomeMate" APP, it operates as home security system with customizable equipment linkage function. The sensor is a battery-powered. If it's low battery, the LED of the sensor will blink once every 3 seconds. Then at this time battery is also available for the sensor and the current status queries by APP.

Product list

- Door/Window Sensor ×1
- Double sided tape ×1
- User manual ×1
- Warranty card ×1
- CR2032 button battery ×1

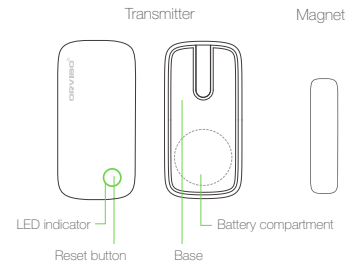
02

Product parameters

Power supply: CR2032 button battery
Standby current: $\leq 1\mu A$
Alarm current: $\leq 15mA$
Communication protocol: ZigBee HA
Wireless standard: IEEE 802.15.4
Wireless frequency: 2.4GHz
Channels: 11, 14, 15, 19, 20, 24, 25
Modulation mode: OQPSK
Encryption mode: AES-128
Communication speed: 250 Kbps
Transmission power: $\leq 4.5dBm$
Receiver sensitivity: $\geq -90dBm$
Communication distance: 80m (in open area)
Casing material: PC+ABS
Operating environment: $-10 - 50^{\circ}C$
Operating humidity: 10% - 90% RH
Transmitter dimensions: 61.5x30.3x11.7mm
Magnet dimensions: 44.8x10.9x7.9mm

03

Product image



LED indicator

LED flashes once every second, slow flash:
Device is searching for network.

LED flashes once: Detection in process.

LED flashes once every three seconds: Low
battery, replace batteries immediately.

NOTE: The battery standby time is about 8-12 months

04

Instruction

Please make sure your Smart Hub is configured into "HomeMate" App before you follow steps below for setup the sensor.

1. Install the APP

Method 1: Scan the QR code to install HomeMate APP;



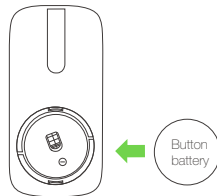
Method 2: Search "HomeMate" in APP store or Google play to install it



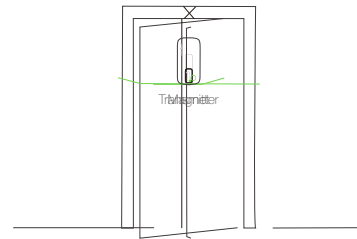
2. Following the APP guidance or direct scanning QR code(the same QR code as above) to get ready to configure
3. Power on the sensor, press "Add Device" in the App. Add devices(sensor) while it's configured
4. Disconnection: Press and hold the Reset button until the green light goes off, the sensor is disconnected from the Hub. Press the button again(slow flashing green light), the sensor is ready to reconnect with the Hub.

Product installation

1. Open the transmitter base cover and insert the battery, the device starts up immediately.



2. Install the transmitter on a door frame, and the magnets on the door or window. The magnet should be installed closer to the right side of the transmitter. Use double-sided tape to paste transmitter and magnet on the installation location.



ORVIBO[®]

Shenzhen ORVIBO Electronics Co., Ltd.

7F, Block A7, Nanshan i Park, No.1001
Xueyuan Road, Nanshan District,
Shenzhen, 518055, PRC
Tel +86 755 8325 6376
www.orvibo.com



www.orvibo.com