

Making The World Recognize Chinese Communication Equipment

POE SWITCHES
INDUSTRIAL SWITCHES



Shenzhen HongRui Optical Technology Co., Ltd.

Add: B#2F Shuangjinhui Industrial Park, Yonghe Road, Heping Village,
Fuyong Town, Bao'an District

Tel: +86 0755 6118 4158

Fax: +86 0755 6118 4158-8002

Email: info@hrgdkj.com

Website: www.hrgdkj.com

www.hrgdkj.com

Shenzhen HongRui Optical Technology Co., Ltd.

Company Profile



Shenzhen HongRui Optical Technology Co.,Ltd was established in Shenzhen, China, is a professional optical fiber network communications equipment production, R&D and sales in one of the manufacturers, our main products include POE switches, industrial Ethernet switches, intelligent management switches, fiber media converter, etc. We have an experienced technical R&D team, who proficient in hardware design, software programming, SCM development, to provide professional ODM services base on different customer needs.

Our company has been always insisted the mission that "Making the world recognize Chinese communications equipment" to serve the customers around the world since it was established. At present we have already set up our sales offices and service centers in more than 32 national various provinces and cities like Beijing, Shanghai, Chengdu and Hangzhou. For the international market we have started close business cooperation in more than 70 countries all over the world including America, Russia, Brazil, Singapore and Germany. The annual production is over 800,000 pieces.

As a national high-tech enterprise, we have a number of research patents, and in the production process in strict compliance with ISO9001 and CCC, CE, ROHS international standards, those standards which covered in our product R&D services and management. The company R&D staff accounted for 30% of the total number of employees, and has a good cooperation with Broadcom, Microsemi, Qualcomm, Realtek chip manufacturers, we have over 4000 square meters industrial factory area and 4 production lines, with complete set of aging test equipment, consummate product craftwork flow, strict inspection process and sufficient stocks, ensure the high reliability of the products and fast market response capability.

Our products are widely use in the field of telecom, power and security surveillance industries. The company not only make its self-own brand "HRUI", but also a professional production base engage in mass OEM/ODM production in the industry. We are able to provide comprehensive design and for all the customers with different level demands, and supply the most competitive products and service over the world!



Enterprise Culture



Our Mission

Making the World Recognize Chinese Communication Equipment.

Our Vision

Become a Benchmark For the Intelligent Network Communication Industry.

Core Values

Integrity, Innovation, Gratitude and Dedication, Responsibility.

Business philosophy

The pursuit of excellence, create a legend!
Continue to create greater value for customers,
provide employees with a platform to realize their dreams,
and make due contributions to society!



Product Development

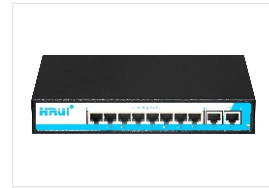
We have a strong technical R&D team, with many years of R&D experience and continuously product upgrades, all products are developed by our R&D team, making our products the most stable and cost-effective industry benchmark on the market.

POE Switch for Project needs

Our POE switch are design base on customer feedback and market demand, in compliance with IEEE802.3af and IEEE802.3at protocols, product is upgrade according to project use, better to meet the requirement of Surveillance, wireless, IP Phone and others industries.



10/100M 6 Port POE Switch



100/1000M 10 Port POE Switch



10/100M 19 Port POE Switch



100/1000M 26 Port POE Switch

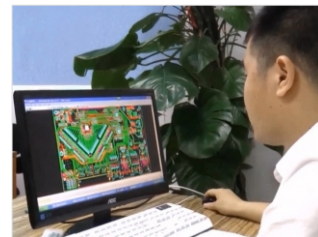
Hongrui PSE04 POE Chipset

PSE04 is our self-developed 4 port intelligent Ethernet power supply IC (Power-over-Ethernet, PoE), Our company has applied for patent certificate. It is the best energy efficient and cost effective 4-port PoE solution on the market.



OEM/ODM Design

Hongrui have experienced technical R&D team, proficient in hardware design, software programming, MCU development, etc., able to provide professional OEM/ODM services according to different customer needs, is the most professional POE switch OEM/ODM manufacturers in China.



Quality Control

Hongrui's product production strictly abides by the ISO9001 standard. The products have pass CCC, FCC, ROHS and the Ministry of Public Security inspection, which reduces the failure rate by more than 60% compared with others product on the market.



Incoming material inspection



High and low temperature cycle test



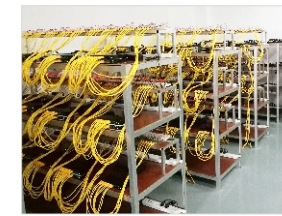
SMT machine



Network tester



Load tester



Batch aging test



OQC quality inspection



Finished goods storage and shipment

Certification



CCC



FCC



CE



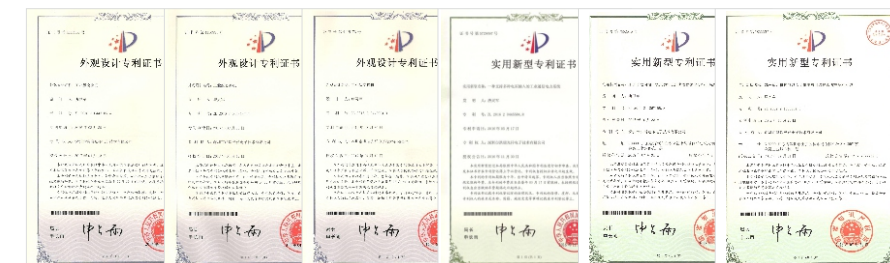
RoHS



Quality Management System Certification



Product Testing Report



Utility Model Patent



Computing Software Copyright

Strategic Cooperation

Insist on develop our own product, integrate high-quality resources, and establish a good strategic partnership with Broadcom, Microsemi, Marvell, Realtek chip manufacturers.



Applications

Our products are widely used in public transportation case systems, urban integrated monitoring systems, digital urban systems, production safety management systems, in highways, urban security, railways, petroleum and petrochemical, military, power, finance, etc.



Changsha Maglev T3 Project



Shenzhen Metro Line 20 Project



Shenzhen Bus Charging Station Project



US Kennedy International Airport



Vietnam Intelligent transportation



UK ANPR System



Fuzhou Safe City System Project



Changsha International Exhibition Center



Chongqing University Safe Campus System Project



Shanxi Datong coal integrated monitoring system



Armed Police Digital Monitoring System



Daqing Oilfield Mining Automation Network Solution



Urumqi Train Station Optical Fiber Communication Project



Ya'an Highway Monitoring System



Shijiazhuang Troops Monitoring System Project



Tianjin Highway Monitoring System

CONTENTS

Standard POE Switch

1~4

Industrial grade POE/Ethernet Switch

5~8

Fiber Media Converter

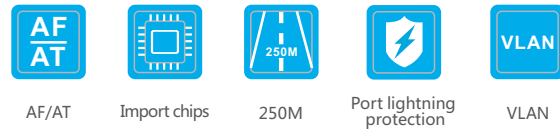
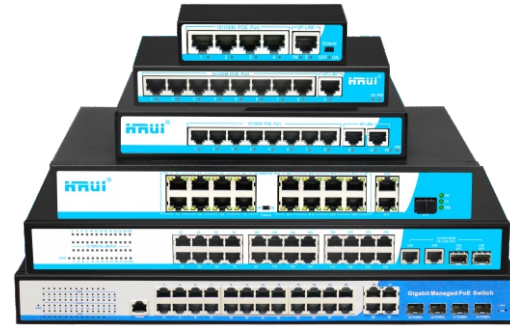
9~10

Passive POE Switch

11~12

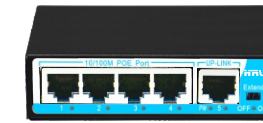
Product Introduction

HRUI ethernet intelligent POE switches family are professionally designed for Security and communication industry, all the family products are using fanless, low-cost and Thermostable designs base on engineering requirement, the performance are much more stable. Our products quality meets CCC, FCC, CE, ROHS standard, able to provide reliable and economical ethernet equipment solution for business customers.



Product parameters

Connector Type	Ethernet port: RJ45 Fiber port: LC/SC/FC/ST(optional) Transceiver module: SFP, 1*9 fiber module
Network Media	10BASE-T:Cat3,4,5 UTP(≤100m)/10BASE-T:Cat6 or better UTP(≤250m) 100BASE-TX:Cat5 or better UTP(≤150m)/ 1000BASE-TX:Cat6 or better UTP(≤100m)
Optical Parametric	Multimode fiber: 850nm,1310nm, Transmission Distance: 550m/ 2Km Single mode fiber: 1310nm, 1550nm, Transmission Distance: 20/40 /60/80/100/120Km
MTBF	190000 hours
Forwarding Mode	Store-And-Forward
Network Protocols	IEEE802.3AF/AT; IEEE802.3i 10Base; IEEE802.3u 100BaseTX; IEEE802.3ab 1000Base; IEEE802.3ae 10000Base; IEEE802.3x flow control; IEEE802.3ad; IEEE 802.w; IEEE 802.1q; IEEE 802.1p, QoS/CoS; IGMP Snooping
Power Supply	Built-in power adapter: AC 100-260V External power adapter: DC 48-55V
POE Specification	POE standard: support IEEE802.3af /IEEE802.3at Max power for each port: 15.4 W (IEEE 802.3af) 30 W (IEEE 802.3at) POE Compatibility: IEEE 802.3af/at self-adaption POE output voltage: DC 48V POE power pin: 1/2+ ; 3/6- (or 4/5+;7/8-)
Management Function	CLI: Support serial command line management TELNET: Support telnet remote command management SNMP: Support v1/2/3 WEB: Supports two layers, three layers setting, etc.
Working Environment	Operating Temperature: -20 °C ~ 55 °C;Storage Temperature: -40 °C ~ 85 °C; Maximum Operating Relative Humidity: 90%,non-condensing Maximum Storage Relative Humidity: 95%,non-condensing
Certification	CCC,CE Mark ,commercial; CE/LVD EN60950, RoHS
Radiation	CE mark, commercial; FCC Part 15 Class B; VCCI Class B; EN 55022 (CISPR 22), Class B
Warranty	Non-artificial damage, 2 years warranty



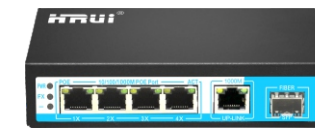
HR901-AF-41

- 4*10/100M POE Port +1*100M Uplink
- Support IEEE802.3 af/at
- Support extend mode up to 250m
- External Power 48W
- Bandwidth: 1Gbps



HR901-AFG-41

- 4*Gigabit POE Port + 1*Gigabit uplink
- Support IEEE802.3 af/at
- Support VLAN mode
- External Power 65W
- Bandwidth: 10Gbps



HR901-AFG-411S

- 4*Gigabit POE Port + 1*Gigabit Ethernet Uplink + 1*Gigabit SFP Uplink
- Support IEEE802.3 af/at
- Support VLAN mode
- External Power 65W
- Bandwidth: 12Gbps



HR901-AF-81

- 8*10/100M POE Port + 1*10/100M Uplink
- Support IEEE802.3 af/at
- External Power 104W
- Bandwidth: 1.8Gbps



HR901-AF-42N

- 4*10/100M POE Port + 2*10/100M Uplink
- Support IEEE802.3 af/at
- Support Extend mode and Vlan mode
- Internal Power 65W
- Bandwidth: 1.2Gbps



HR901-AF-82N

- 8*10/100M POE Port + 2*10/100M Uplink
- Support IEEE802.3 af/at
- Support Extend mode and Vlan mode
- Internal Power 150W
- Bandwidth: 2Gbps



HR901-AF-82GN

- 8*10/100M POE Port + 2*Gigabit Uplink
- Support IEEE802.3 af/at
- Support Extend mode and Vlan mode
- Internal Power 150W
- Bandwidth: 5.6Gbps



HR901-AFG-82N

- 8*Gigabit POE Port + 2*Gigabit Uplink
- Support IEEE802.3 af/at
- Internal Power 150W
- Bandwidth: 20Gbps



HR901-AF-1622S

- 16*10/100M POE Port +2*Gigabit Combo Port
- Support IEEE802.3 af/at
- Internal Power 300/400W
- Bandwidth: 7.2Gbps



HR901-AF-2422S

- 24*10/100M POE Port +2*Gigabit Combo
- Support IEEE802.3 af/at
- Internal Power 300/400W
- Bandwidth: 8.8Gbps



HR901-AF-143G

- 14*10/100M POE Port + 3*Gigabit Uplink
- Support IEEE802.3 af/at
- Support Extend mode up to 250m
- Internal Power 200/300W
- Bandwidth: 8.8Gbps



HR901-AF-1621GS

- 16*10/100M POE Port +2*Gigabit Ethernet Uplink + 1*Gigabit SFP Uplink
- Support IEEE802.3 af/at
- Support Extend mode up to 250m
- Internal Power 200/300W
- Bandwidth: 9.2Gbps



HR901-AFG-162S

- 16*Gigabit POE Port +2*Gigabit SFP Port
- Support IEEE802.3 af/at
- Internal Power 300/400W
- Bandwidth: 36Gbps



HR901-AFG-242S

- 24*Gigabit POE Port +2*Gigabit SFP Port
- Support IEEE802.3 af/at
- Internal Power 300/400W
- Bandwidth: 52Gbps



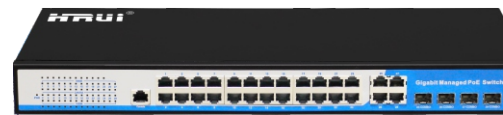
HR901-AF-821GS

- 8*10/100M POE Port +2*Gigabit Ethernet Uplink +1*Gigabit SFP Uplink
- Support IEEE802.3 af/at
- Support Extend mode and Vlan mode
- External Power 104W



HR-AFGM-82NS

- 8*Gigabit POE Port +2*Gigabit SFP Uplink
- Support IEEE802.3 af/at
- Layer 2 Management
- Internal Power 150W
- Bandwidth: 20Gbps



HR-AFGM-2444S

- 24*Gigabit POE Port +4*Gigabit Combo Port
- Support IEEE802.3 af/at
- Layer 2 Management
- Internal Power 400W
- Bandwidth: 56Gbps



HR-AFG-SWTG342408

- 24*Gigabit POE Port + 8*Gigabit SFP Combo Port + 4*10G SFP Uplink
- Support IEEE802.3 af/at
- Fanless design
- Layer 3 Management
- Internal Power 400/500W
- Bandwidth: 128Gbps

Product Introduction

HRUI industrial POE switches family are developed aiming at industrial communication, the products support 802.3af/at international standard, all the ports support wire-speed forwarding, Ring Redundancy, DIN RAIL installation, able to meet the requirement of industrial environment, our products meet CCC, FCC, CE, RoHS standard, able to provide reliable and economical ethernet equipment solution for business customers.



- 5 years warranty
- 40~85°
- Ring network
- IP 40
- 5-55V
- 6 kv lightning protection



Product parameters

Connector Type	Ethernet port: RJ45 fiber port: LC/SC/FC/ST(optional) Transceiver module: SFP, 1*9 fiber module
Network Protocols	IEEE802.3AF/AT; IEEE802.3i 10Base; IEEE802.3u 100BaseTX; IEEE802.3ab 1000Base; IEEE802.3ae 10000Base; IEEE802.3x flow control; IEEE802.3ad; IEEE 802.w; IEEE 802.1q; IEEE 802.1p, QoS/CoS; IGMP Snooping
Optical Parametric	Multimode Fiber: 850nm,1310nm,Transmission Distance: 550m /2Km Single mode Fiber: 1310nm, 1550nm Transmission Distance: 20/40 /60/80/100/120Km
POE Specification	PoE standard: support IEEE802.3af /IEEE802.3at Max power for each port: 15.4 W (IEEE 802.3af) 30 W (IEEE 802.3at) PoE Compatibility: IEEE 802.3af/at self-adaption POE output voltage: DC 48V POE power pin: 1/2+ ; 3/6- (or 4/5+;7/8-)
Forwarding Mode	Store-And-Forward
Network Media	10BASE-T:Cat3,4,5 UTP(≤100m)/10BASE-T:Cat6 or better UTP(≤250m) 100BASE-TX:Cat5 or better UTP(≤150m)/ 1000BASE-TX:Cat6 or better UTP(≤100m)
Power Supply	Built-in power adapter: AC 100-260V External power adapter: DC 48-55V
Management Function	CLI: Support serial command line management TELNET: Support telnet remote command management SNMP: Support v1/2/3 WEB: Supports two layers, three layers setting, etc.
Ring Redundancy	Support STP/RSTP/MSTP
MTBF	300,000 hours
Working Environment	Operating Temperature: -40 °C ~ 75 °C;Storage Temperature: -40°C ~ 85 °C;Working Humidity: 0~95%
Industrial Standard	EMI: FCC Part 15, CISPR (EN55022) class A; EMS: EN61000-4-2 (ESD); EN61000-4-4(EFT);EN61000-4-5 (Surge); shock: IEC 60068-2-27 Vibration: IEC 60068-2-6 Free fall: IEC 60068-2-32;
Protection	IP 40 Protection Grade, All Ports Anti-Thunder 6000V
Installation	Supports Din-rail or Hanger installation
Radiation	CE mark, commercial / FCC Part 15 Class B / VCCI Class B EN 55022 (CISPR 22), Class B
Warranty	Non-artificial damage, 5 years warranty



HR600-AF-11F-T

- 1*10/100M POE Port +1*100M SC Fiber Uplink
- 6KV Lightning Protection
- Working Temperature -40~85°C
- Ip40 protection, Din-rail Installation
- Provide 5 years warranty



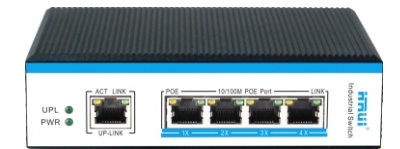
HR600-AF-21F-T

- 2*10/100M POE Port +1*100M SC Fiber Uplink
- 6KV Lightning Protection
- Working Temperature -40~85°C
- Ip40 protection, Din-rail Installation
- Provide 5 years warranty



HR600-AF-41F-T

- 4*10/100M POE Port +1*100M SC Fiber Uplink
- 6KV Lightning Protection
- Working Temperature -40~85°C
- Ip40 protection, Din-rail Installation
- Provide 5 years warranty



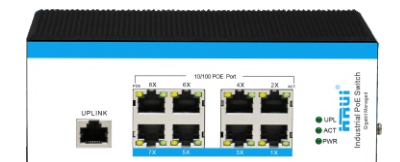
HR600-AF-41

- 4*10/100M POE Port +1*100M Uplink
- 6KV Lightning Protection
- Working Temperature -40~85°C
- Ip40 protection, Din-rail Installation
- Provide 5 years warranty



HR600-AFG-42S

- 4*Gigabit POE Port +2*Gigabit SFP Uplink
- 6KV Lightning Protection
- Working Temperature -40~85°C
- Ip40 protection, Din-rail Installation
- Provide 5 years warranty



HR600-AF-81

- 8*10/100M POE Port +1*100M Uplink
- 6KV Lightning Protection
- Working Temperature -40~85°C
- Ip40 protection, Din-rail Installation
- Provide 5 years warranty



HR600-AFG-11F-SFP

- 1*Gigabit POE Port +1*Gigabit SFP Uplink
- 6KV Lightning Protection
- Working Temperature -40~85°C
- Ip40 protection, Din-rail Installation
- Provide 5 years warranty



HR600-AFG-21F-SFP

- 2*Gigabit POE Port +1*Gigabit SFP Uplink
- 6KV Lightning Protection
- Working Temperature -40~85°C
- Ip40 protection, Din-rail Installation
- Provide 5 years warranty



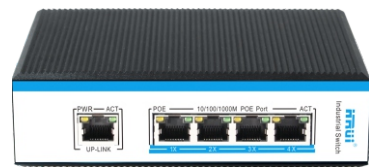
HR600-AFG-21F-T

- 2*Gigabit POE Port +1*Gigabit SC Fiber Uplink
- 6KV Lightning Protection
- Working Temperature -40~85°C
- Ip40 protection, Din-rail Installation
- Provide 5 years warranty



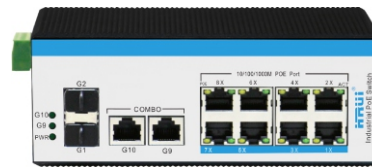
HR600-AFG-41F-SFP

- 4*Gigabit POE Port +1*Gigabit SFP Uplink
- 6KV Lightning Protection
- Working Temperature -40~85°C
- Ip40 protection, Din-rail Installation
- Provide 5 years warranty



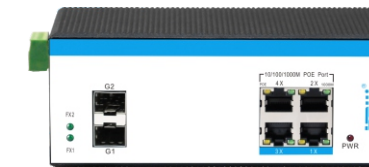
HR600-AFG-41

- 4*Gigabit POE Port +1* Gigabit Uplink
- 6KV Lightning Protection
- Working Temperature -40~85°C
- Ip40 protection, Din-rail Installation
- Provide 5 years warranty



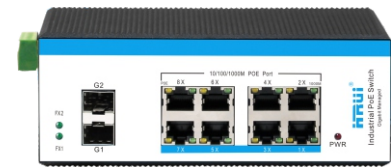
HR600-AFG-822S

- 8*Gigabit POE Port +2*Gigabit Combo Port
- 6KV Lightning Protection
- Working Temperature -40~85°C
- Ip40 protection, Din-rail Installation
- Provide 5 years warranty



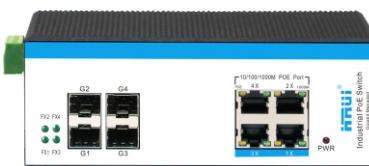
HR600M-AFG-42F-SFP

- 4*Gigabit POE Port + 2*Gigabit SFP Uplink
- Layer 2 Management
- 6KV Lightning Protection
- Working Temperature -40~85°C
- Bandwidth: 12Gbps
- Provide 5 years warranty



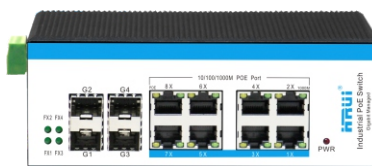
HR600M-AFG-82F-SFP

- 8*Gigabit POE Port +2*Gigabit SFP Uplink
- Layer 2 Management
- 6KV Lightning Protection
- Working Temperature -40~85°C
- Bandwidth: 20Gbps
- Provide 5 years warranty



HR600M-AFG-44F-SFP

- 4*Gigabit POE Port + 4*Gigabit SFP Uplink
- Layer 2 Management
- 6KV Lightning Protection
- Working Temperature -40~85°C
- Bandwidth: 16Gbps
- Provide 5 years warranty



HR600M-AFG-84F-SFP

- 8*Gigabit POE Port + 4*Gigabit SFP Uplink
- Layer 2 Management
- 6KV Lightning Protection
- Working Temperature -40~85°C
- Bandwidth: 24Gbps
- Provide 5 years warranty



HR600M-SWTG34240F8

- 24*Gigabit SFP Port +8*Gigabit RJ45 Combo Port +4*10G SFP Uplink
- Fanless design
- Layer 3 Management
- 6KV Lightning Protection
- Working Temperature -40~85°C
- Bandwidth: 128Gbps
- Provide 5 years warranty

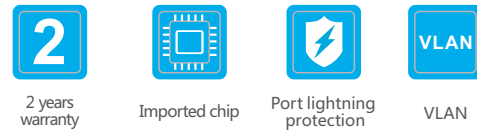


HR600M-AFG-SWTG34240S

- 24*Gigabit POE Port+8*Gigabit SFP Combo Port + 4*10G SFP Uplink
- Fanless design
- Layer 3 Management
- 6KV Lightning Protection
- Working Temperature -40~85°C
- Bandwidth: 128Gbps
- Provide 5 years warranty

Product Introduction

HRUI ethernet fiber optical media converter family are professionally designed for Security and communication industry, integrate most of functions from traditional ethernet switches, maximum ports up to 28, which means it will be much more convenient for all kinds of project. Also with many excellent features such as isolation protection, stable operation, easy maintenance. Our products meet CCC, FCC, CE and RoHS standard, able to provide reliable and economical fiber optical network solution for business customers.



Product parameters

Connector Type	Ethernet port: RJ45 Fiber port: LC/SC/FC/ST(optional) Transceiver module: SFP, 1*9 fiber module
Network Media	10BASE-T: Cat3, 4, 5 UTP (≤100m) / 10BASE-T: Cat6 or better UTP (≤250m) 100BASE-TX: Cat5 or better UTP (≤150m) / 1000BASE-TX: Cat6 or better UTP (≤100m)
Optical Parametric	Multimode fiber: 850nm, 1310nm, Transmission Distance: 550m / 2Km Single mode fiber: 1310nm, 1550nm, Transmission Distance: 20/40 / 60/80/100/120Km
Forwarding Mode	Store-And-Forward
Network Protocols	IEEE802.3AF/AT; IEEE802.3i 10Base; IEEE802.3u 100BaseTX; IEEE802.3ab 1000Base; IEEE802.3ae 10000Base; IEEE802.3x flow control; IEEE802.3ad; IEEE 802.w; IEEE 802.1q; IEEE 802.1p, QoS/CoS; IGMP Snooping
Power Supply	Input: DC 5V1A/5V2A
Data Transmission Rate	Ethernet 10Mbps half-duplex, 20Mbps full-duplex Fast Ethernet 100Mbps half-duplex, 200Mbps full-duplex Gigabit Ethernet 2000Mbps full-duplex
Working Environment	Operating Temperature: -20°C ~ 55 °C; Storage Temperature: -40 °C ~ 85 °C; Maximum Operating Relative Humidity: 90%, non-condensing Maximum Storage Relative Humidity: 95%, non-condensing
Certification	CE Mark ,commercial; CE/LVD EN60950, RoHS
Radiation	CE mark, commercial; FCC Part 15 Class B; VCCI Class B; EN 55022 (CISPR 22), Class B
Warranty	Non-artificial damage, 2 years warranty



HR900W-FE-20-T

- 1*10/100M Rj45 Port + 1*100M SC Fiber Port



HR900K-FE-20

- 1*10/100M Rj45 Port + 1*100M SC Fiber Port
- Card Type Media converter
- Compatible with 2U Rack mount Chassis



HR900W-1G2E-20-T

- 2*Gigabit Rj45 Port + 1*Gigabit SC Fiber Port



HR900W-1F4E-20-T

- 4*10/100M Rj45 Port + 1*100M SC Fiber Port
- Support Vlan Mode



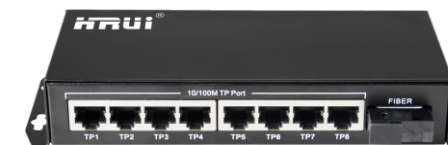
HR900W-1G4GE-20-T

- 4*Gigabit Rj45 Port + 1*Gigabit SC Fiber Port



HR900W-2G4GE-20-

- 4*Gigabit Rj45 Port + 2*Gigabit SFP Fiber Port



HR900W-1F8E-20-T

- 8*10/100M Rj45 Port + 1*100M SC Fiber Port

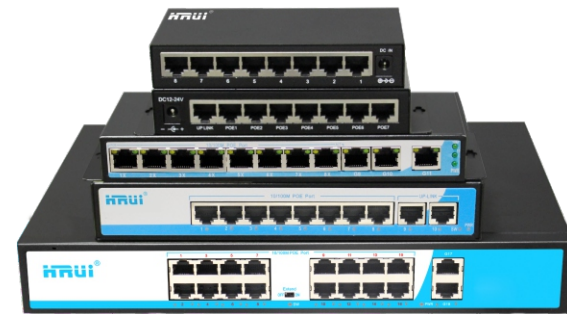


HR900W-2G10GE-20

- 8*Gigabit RJ45 Port + 2*Gigabit Combo Port

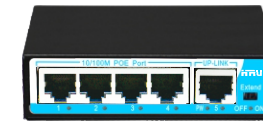
Product Introduction

HRUI Passive POE switches family are a kind of economic POE switches professionally designed for Security and communication industry, it's mandatory power design and the power port and uplink ports are marked clearly for easy of use. Our products work stable, the quality meets CCC, FCC, CE, ROHS standard, able to provide reliable and economical ethernet equipment solution for business customers.



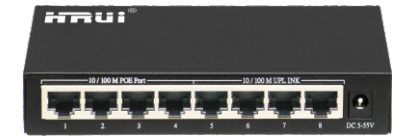
Product parameters

Connector Type	Ethernet port: RJ45 Fiber port: LC/SC/FC/ST(optional) Transceiver module: SFP, 1*9 fiber module
Network Media	10BASE-T:Cat3,4,5 UTP(≤100m)/10BASE-T:Cat6 or better UTP(≤250m) 100BASE-TX:Cat5 or better UTP(≤150m)/ 1000BASE-TX:Cat6 or better UTP(≤100m)
Optical Parametric	Multimode fiber: 850nm,1310nm, Transmission Distance: 550m/ 2Km Single mode fiber: 1310nm, 1550nm, Transmission Distance: 20/40/60/80/100/120Km
MTBF	100000 hours
Forwarding Mode	Store-And-Forward
Network Protocols	IEEE802.3AF/AT; IEEE802.3i 10Base; IEEE802.3u 100BaseTX; IEEE802.3ab 1000Base;IEEE802.3ae 10000Base; IEEE802.3x flow control; IEEE802.3ad; IEEE 802.w; IEEE 802.1q; IEEE 802.1p, QoS/CoS; IGMP Snooping
Power Supply	Built-in power adapter: AC 100-260V; External power adapter: DC 24/48V
POE Specification	45+ 78- (12+, 36- Optional), output voltage optional for passive POE port
Working Environme	Operating Temperature: -20°C ~ 55 °C; Storage Temperature: -40 °C ~ 85 °C; Maximum Operating Relative Humidity: 90%, non-condensing Maximum Storage Relative Humidity: 95%, non-condensing
Certification	CCC,CE Mark ,commercial; CE/LVD EN60950, RoHS
Radiation	CE mark, commercial; FCC Part 15 Class B; VCCI Class B; EN 55022 (CISPR 22), Class B
Warranty	Non-artificial damage, 2 years warranty



HR901-FB-41

- 4*10/100M POE Port +1*10/100M Uplink
- Passive POE, 24V/48V, POE mode B (45+ 78-)
- Support Extend Mode up to 250 meters
- External Power 48W
- Bandwidth: 1Gbps



HR901-FB-44

- 4*10/100M POE Port +4*10/100M Uplink
- Passive POE, 24V/48V, POE mode B (45+ 78-)
- Support Extend Mode up to 250 meters
- External Power 48W
- Bandwidth: 1.6Gbps



HR901-FB-42N

- 4*10/100M POE Port +2*10/100M Uplink
- Passive POE, 24V/48V, POE mode B (45+ 78-)
- Support Extend Mode and VLAN mode
- Internal Power 65W
- Bandwidth: 1.2Gbps



HR901-FB-82N

- 8*10/100M POE Port +2*100M Uplink
- Passive POE, 24V/48V, POE mode B (45+ 78-)
- Support Extend Mode and VLAN mode
- Internal Power 150W
- Bandwidth: 2Gbps



HR901-FB-821GS

- 8*10/100M POE Port +2*Gigabit Ethernet Uplink +1*Gigabit SFP Uplink
- Passive POE, 24V/48V, POE mode B (45+ 78-)
- Support Extend mode and VLAN mode
- External Power 104W
- Bandwidth: 7.6Gbps



HR901-FB-162GS

- 16*10/100M POE Port+ 2*Gigabit Ethernet Uplink + 1*Gigabit SFP Uplink
- Passive POE, 24V/48V, POE mode B (45+ 78-)
- Support Extend Mode up to 250 meters
- External Power 104W
- Bandwidth: 9.2Gbps