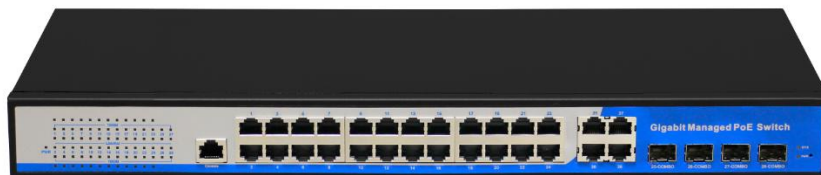


## 28 Ports Managed POE Switch



### (HR901-AFGM-2444S)

This HR901-AFGM-2444S POE switch provides a network point for data transmission. All the 24 POE ports can be connected with 10/100/1000Mbps quickly, and the uplink port, The switch features simple and reliable design, automatic identification Ethernet requirements, duplex and high-speed.

This cost-effective switch provides network layout need to simplify wireless access point (AP) and IP-based surveillance cameras network cameras in order to install in commercial network and home network. It is ideal choice for those want to deploy a small commercial network and home network that use wireless access point (AP) and IP-based surveillance cameras.

#### ● Features

1. Can transfer data for network surveillance cameras
2. 24x 1000Mbps auto-sensing POE ports, 4x 10/100/1000M Combo ports, 1 Console
3. Supports port auto-flip (Auto MDI/ MDIX)
4. Uplink port: 8Gbps fiber interface
6. Adopts store-and-forward architecture
7. Features with fanless, natural cooling, small, compact and quiet design, suitable for desktop or wall mounting
8. Built-in 1U rack power supply series, easy to place it into standard mounting brackets
9. Optic fiber module is not included, can be ordered separately
10. Remote Web interface for Switch management

#### ● Target Industries

1. HD monitor transmission and power supply
2. Wireless AP layout transmission and power supply
3. Network telephone transmission, intelligent house and home system
4. Intelligent transportation supervisory system (ITS)
5. High-speed Way supervisory/Tele-Communication System
6. Security protection system, TV medical treatment
7. Long-distance Multi-media Schooling, Campus monitoring
8. Long-distance broadcast television transmission system
9. High-building Security Protection, Military Tele-Com projects

**Technical parameter list**

<b>Hardware</b>	
Product Name	28 Ports Managed POE Switch
Product Model	HR901-AFGM-2444S
Interface	24*10/100/1000M POE ports + 4 Gigabit SFP/TP Combo ports, 1 Console port
Optical	Number of interface : 4 <b>Connector: LC by default, SC optional</b> Wave length: Depend on SFP ports
Electrical ports	Number of interface : 28 <b>Connector: POE</b> <b>Rate: 10/100/1000M</b>
Bandwidth:	56Gbps (non-blocking)
Packet Buffer Memory:	4.1M
MAC	8K
MTBF:	190,000 hours (about 21 years)
CPU	500MHZ
Switching	Store & Forward
Power Supply	AC 90~250V 50~60Hz
Transmission mode	Half/Full Duplex
Working temperature	0℃~50℃
Storage temperature	-40℃~70℃
<b>Software</b>	
Network Protocols and Standards	IEEE 802.3i 10BASET; IEEE 802.3u 100BASETX; IEEE 802.3x Flow Control; IEEE 802.1af DTE Power via MDI; IEEE 802.3af
VLAN	Supports port-based VLAN Supports up to 4096 VLANs Supports 802.1Q standard VLAN
Spanning tree	Support STP spanning tree protocol Supports RSTP Rapid Spanning Tree Protocol Supports MSTP Rapid Spanning Tree Protocol
Link Aggregation	Supports 8 groups of aggregation, each group supports up to 8 ports
Port mirroring	Supports both side-way port mirroring
Loop protection	Support loop protection, real-time detection, rapid alarm, precise positioning, intelligent blocking, automatic recovery
Port isolation	Support the downlink port isolation, and can communicate with the uplink port
Port flow control	Half-duplex based on back pressure control Full duplex based on PAUSE frame

28 ports managed POE Switch

Port speed limit	Supports port-based input / output bandwidth management
Multicast control	IGMPv1 / 2/3 and MLDv1 / 2 snooping
	Support GMRP registration
	Multicast address management, multicast VLAN, multicast routing port, and static multicast address
DHCP	DHCP snooping
Storm suppression	Supports unknown unicast, multicast, unknown multicast, broadcast type storm suppression Storm suppression based on bandwidth regulation and storm filtering
QOS	802.1p port queue priority algorithm Cos / Tos, QOS mark WRR (Weighted Round Robin), Weighted Priority Rotation Algorithm Support WRR, SP, WFQ three priority scheduling mode
Network management	Support WEB interface management CLI management based on Telnet and Console SNMP V1 / V2 / V3 management
Security	User port+IP address+MAC ACL based on IP and MAC Security properties of port based MAC address quantities

Ordering Information

Model No.	Description
HR-AFGM-2444S	24x 10/100/1000M POE ports(all ports support MDI/MDIX) + 4 Combo ports +1 console port

