

2.2 Modifying Device IP Address

NOTE

- You can modify IP address of one or multiple devices in one time. This section is based on modifying IP addresses in batch.
- Modifying IP addresses in batch is available only when the corresponding devices have the same login password.

Step 1 Follow Step 1 to Step 4 in 2.1 Initializing Device to search devices in your network segment.

NOTE

After clicking **Search setting**, please enter the **username** and **password**, and please make sure they are the same as what you set during initialization, otherwise there will be "wrong password" notice.

Step 2 Select the devices which IP addresses need to be modified, and then click **Modify IP**. The **Modify IP Address** interface is displayed. See Figure 2-3.

Figure 2-3 Modify IP Address interface



Step 3 Select **Static** mode and enter start IP, subnet mask and gateway.

NOTE

- IP addresses of multiple devices will be set to the same if you select **Same IP**.
- If DHCP server is available in the network, devices will automatically obtain IP addresses from DHCP server when you select **DHCP**.

Step 4 Click **OK**.

2.3 Logging in Web Interface

Step 1 Open IE browser, enter the IP address of the device in the address bar and press Enter.

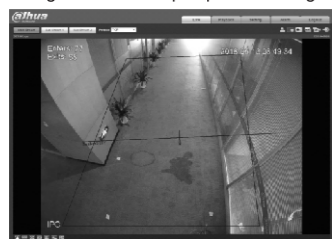
If the setup wizard is displayed, follow the instructions to finish the settings.

Step 2 Enter user name and password in the log in box, and then click **Login**.

Step 3 For first time login, click **Click Here to Download Plugin** and install the plugin as instructed.

You can enable the people counting function and smart plan, and then the **Live** interface is displayed as Figure 2-4.

Figure 2-4 Live-people counting



If the counting rule is switched to in area people counting, the **Live** interface is displayed as Figure 2-5

Figure 2-5 Live-in area people counting

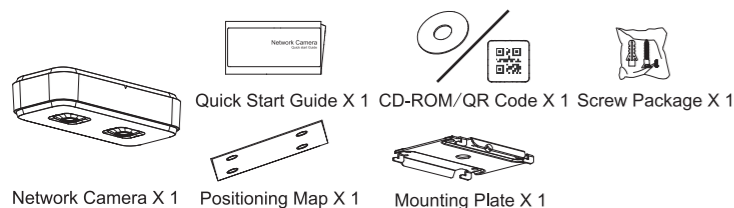


3 Device Installation

3.1 Packing List

NOTE

- The tool required for the installation such as electric drill is not provided in the packing.
- The operation manual and related tool are contained in the disk or the QR code, and the actual packing shall prevail.

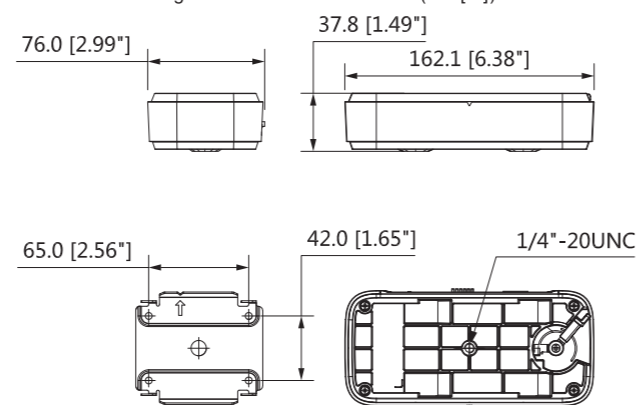


3.2 Dimension

NOTE

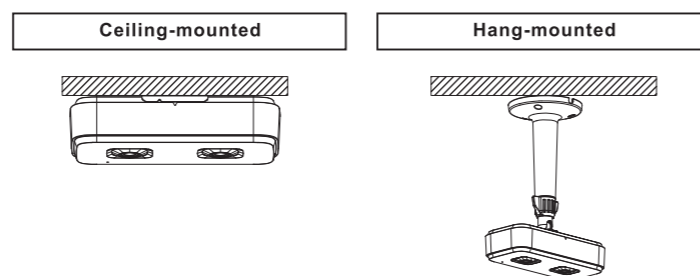
Following figures are for reference only, and the actual product shall prevail.

Figure 3-1 Device dimension (mm[in])

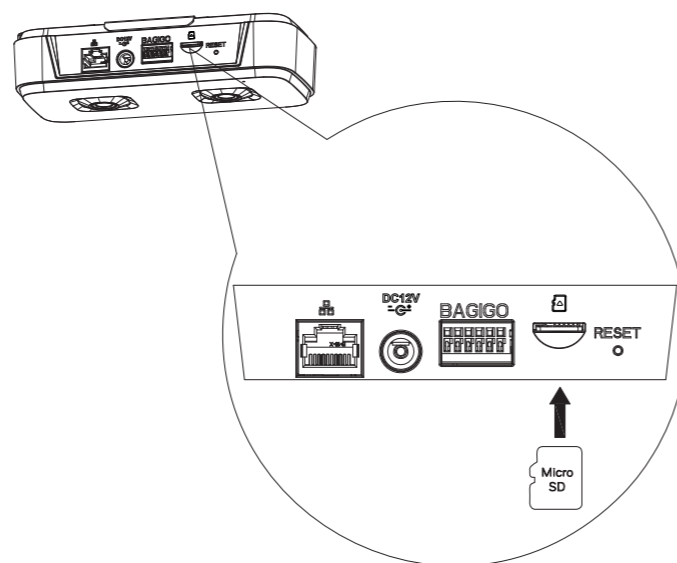


3.3 Installing Device

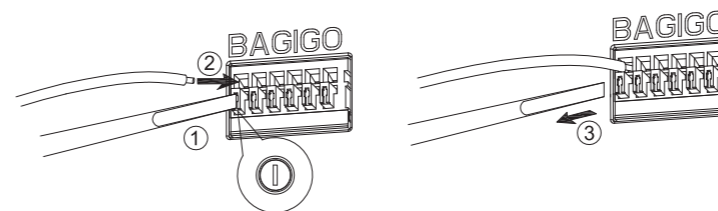
3.3.1 Installation Type



3.3.2 Installing SD Card (Optional)



3.3.3 Connecting I/O Ports



3.3.4 Attaching Device

CAUTION

Make sure the mounting surface is strong enough to hold at least three times of the weight of the device and bracket.

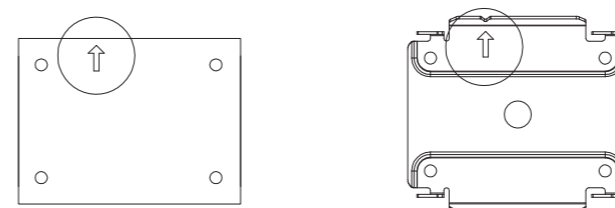
NOTE

- To ensure detection accuracy, please keep the installation height between 2.2 m–3.8 m.
- Please make sure the two lenses are at the same height.

Mounting Plate

NOTE

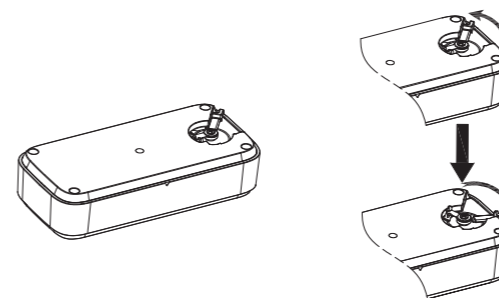
When installing the mounting plate, align the arrows on the mounting plate and the positioning map.



Locking Lever

NOTE

- The locking lever can lock the device to the mounting plate after installation.
- The lever is at locking position by default, please turn it clockwise to unlock it before installation; and lock it back afterwards.



Fixing Device

